



Quarterly consolidated report for the period
1st October 2019 – 31st December 2019

14th February 2020

TABLE OF CONTENTS

Table of contents	2
1.1 Company profile	4
1.2 Board of directors	5
2 Condensed Standalone Financial statement for the 4 Q 2019	6
2.1 Condensed Standalone statement of comprehensive income and financial position	6
2.2 Condensed Standalone statement of cashflow	7
3 Condensed consolidated Financial statement for the 4 Q 2019	10
3.1 Condensed Consolidated statement of comprehensive income	10
3.2 Condensed statement of financial position	10
3.3 Condensed Consolidated statement of cashflow	11
3.4 Condensed Consolidated statement for changes in equity	12
4 Applied accountancy principles	13
5 The Board of Directors’ comment on the factors and events that affect the achieved financial results. ...	22
5.1 Comments to the Condensed Consolidated statement of comprehensive income and financial position	22
5.2 Comments to the condensed consolidated statement of cash flow	22
5.3 Comments to the condensed consolidated statement for change in equity	22
6 Report on the Company’s activities in 4 Q 2019	22
6.1 Company’s activity	22
6.2 Exchange rates	22
6.3 Production activity	23
6.4 Supply of raw material, Distribution and Trade activity	25
6.5 Export and import	25
7 The Management Board’s standpoint as to the forecasts	26
8 Execution of the investment pipeline	26
9 Initiatives to develop its activities aimed to implement innovative solutions at the enterprise during the period of the report –information on such activities	26



10	Company structure, subject to consolidation	26
11	Shareholders structure	26
12	Number of employees at the end of 4 Q 2019.....	27



General information about the Company

Company details:

Company Name:	Cereal Planet PLC
Address:	Boumpoulinas, 11, 3rd Floor, 1060 Nicosia, Cyprus
Registration number:	HE 304677
Telephone:	+38 (057) 775 81 33, +38 (057) 775 81 34
Mail:	office@cereal.com.ua
www:	www.cereal.com.ua

1.1 COMPANY PROFILE

The core activity of the Cereal Planet Group, and Ukraine based Group of Companies, is the production of cereals (buckwheat, pea, wheat, barley, maize, and millet) with the Group's own equipment. The cereals are distributed B2B and B2C. Majority distribution is done in the B2B format. Major trade marks split into the following groups : BULGUR – convenient food, MAIFAINA – tasty cereal , RIDLANA – top quality products, ZLOTOKOSICA – variety of products, and food for animals. Each group has selection of products and has its own features.

Cereal Planet PLC is a holding company and owns 1 subsidiary - Olimp LLC, production and sales is executed by the subsidiary.

Group of Companies first ventured into grits industry in 1998 and achieved nowadays around 10% of the Ukrainian market.

The Group of companies has a trade chain in Kharkov and in the region, key clients-distributors in large regional and district cities of Ukraine, the sales channels of which are used for sales of Group owned and other trademarks.

The Group's technological equipment enables grain to be used in baking, confectionary, and medical fields (flax, rape, coriander, sunflower), and to be used in the preparation of fodder for various animals based on millet, rape and oats.

The Group has been exporting cereals to more than 30 countries including CIS countries, Europe and Asia for over 15 years. The prevalent export items are cereals and grain manufactured by the Group, as well as grain purchased from agricultural companies in bulk, which are exported using the railway and sea transport. The experience and long-term presence in this market made it possible to create and permanently expand the circle of partners in various countries of the world, the number of which nowadays exceeds 50 companies.

The Group consists of 3 companies:

Cereal Planet PLC – Cyprus based holding Company

Olimp LLC – Ukrainian based trading and distribution company



1.2 BOARD OF DIRECTORS

Anatoli Vlasenko - Chairman of the Board of Directors

Ask Investment Limited – Member of the Board of Directors (nominee)

Ask Management Limited – Member of the Board of Directors (nominee)

Cereal Planet PLC does not have Supervisory Board.



2 CONDENSED STANDALONE FINANCIAL STATEMENT FOR THE 4 Q 2019

Tables below provide condensed interim financial statements of Cereal Planet PLC, in accordance with International Financial Reporting Standards for a 4 Q 2019 (period ended 31 December 2019). All data are presented in thousand EUR.

2.1 CONDENSED STANDALONE STATEMENT OF COMPREHENSIVE INCOME AND FINANCIAL POSITION

Statement of comprehensive income for the period from 01.10.2019 to 31.10.2019

	31 December 2019	31 December 2018
Note	€000	€000
Continuing operations		
Sales revenue	924	1 067
Cost of sales	(776)	(988)
Profit from investment activities		
Income from change in fair value of agricultural products		
Gross profit	148	79
Selling and distribution costs		
Administrative expenses	(82)	(68)
Income from government grants		
Other operating income/(expenses)		
Operating profit	66	11
Financial income/(expenses), net		(3)
Exchange rate differences, net	(3)	
Profit before tax from continuing operations	63	8
Income tax expense	-	-
Profit for the year from continuing operations	63	8
Profit for the year attributable to		
Equity holders of the parent	63	8
Non-controlling interest		
Profit for the year from continuing operations	63	8
Other comprehensive income for the year		
Exchange difference on translating foreign operations		
Total other comprehensive income for the year	-	-
Total comprehensive income for the year, net of tax	63	8
Total comprehensive income attributable to		
Equity holders of the parent	63	8
Non-controlling interest	-	-



Statement of comprehensive financial position for the period 31.12.2019 and 31.12.2018

Statement of financial position
 for the period began 01 January ended 31 December 2019

	31 December 2019	31 December 2018
	€000	€000
Assets		
Non-current assets		
Property, plant and equipment		
Goodwill	0	0
Investments in subsidiaries	107	107
Total non-current assets	107	107
Current assets		
Current biological assets		
Inventories		
Trade and other receivables	5	322
Prepayments and other current		
Deposit		
Cash and cash equivalent	2	0
Total current assets	7	322
Total assets	114	429
Equity and liabilities		
Share capital	53	53
Other reserves	111	111
Retained earnings (accumulated loss	-90	-153
Exchange rate effect	0	0
Equity attributable to equity holders of the parent	74	11
Non-controlling interests	0	0
Total equity	74	11
Non-current liabilities		
Other non-current liabilities		
Deferred tax liability		
Total non-current liabilities	0	0
Current liabilities		
Trade and other payables	40	418
Interest-bearing loans and borrowings		
Provisions		
Total current liabilities	40	418
Total liabilities	40	418
Total equity and liabilities	114	429

2.2 CONDENSED STANDALONE STATEMENT OF CASHFLOW


Statement of cash flows for the period from 01.10.2019 to 31.12.2019
Condensed statement of cash flows
 for the period from 01/01 to 31/12 of 2019 year

€ '000	01/01/2018 - 31/12/2018	01/01/2018 - 31/12/2018
Cash flows from operating activities		
Profit before tax	63	8
Adjustments for:		
Depreciation of property, plant and equipment		
Exchange difference arising on the translation of assets on foreign currencies		
Excess of Group's interest in the net fair value of the subsidiaries' assets and liabilities over cost on acquisition	0	0
Impairment charge of property, plant and equipment	0	0
Interest income	0	0
Interest expense		
Cash flows from operations before working capital changes	63	8
Increase in inventories and work in progress		
Increase in trade and other receivables	316	-322
(Decrease)/increase in trade and other payables	-378	400
Cash flows from operations	1	408
Tax refunded/income tax paid		
Net cash flows from operating activities	1	85
Cash flows from investing activities		
Payment for purchase of property, plant and equipment	0	0
Acquisition of subsidiaries, net cash outflow on acquisition	0	-99
Loans granted	0	0
Interest received	0	0
Net cash flows used in investing activities	0	-99
Cash flows from financing activities		
Proceeds from issue of share capital		
Obtaining loans and borrowings		
Repayments of borrowings		
Suspense account (pending correction of Depreciation, Minority interest and share capital)		
Net cash flows (used in)/from financing activities	0	0
Net decrease in cash and cash equivalents	1	-14
Cash and cash equivalents:		
At beginning of the year/period	0	14
At end of the year/period	2	0

Condensed Standalone statement for changes in equity



Statement of changes in equity for the period from 01.10.2019 ended 31.12.2019

Statement of changes in equity
for the period began 01 January ended 31 December 2019

	Share capital	Retained earnings attributable to equity holders of the parent	Exchange rate effect	Additional paid-in capital	Total
Balance at 31 December 2017	53	-161	0	111	18
Profit for the year		8	0	-	8
Other comprehensive income		-	-	-	-
Increase of share capital					-
Balance at 31 December 2018	53	-153	0	111	11
Balance at 31 December 2018	53	-153	0	111	11
Profit for the year		63	0	-	63
Other comprehensive income		-	-	-	-
Increase of share capital					-
Balance at 31 December 2019	53	-90	-1	111	73



3 CONDENSED CONSOLIDATED FINANCIAL STATEMENT FOR THE 4 Q 2019

Tables below provide condensed consolidated interim financial statements of Cereal Planet PLC, in accordance with International Financial Reporting Standards for the 4 Q 2019 (period ended 31.12.2019). The condensed consolidated interim financial statements and comprehensive income position as well as consolidated statement for the changes in the equity present comparative data for 31.12.2018. All data are presented in thousand EUR.

3.1 CONDENSED CONSOLIDATED STATEMENT OF COMPREHENSIVE INCOME

Condensed statement of profit or loss and other comprehensive income for the period from 01.10.2019 to 31.12.2019 (with comparative data).

Condensed statement of profit or loss and other comprehensive income for the period from 01/01 to 31/12 of 2019 year (with comparative data)

	01/01/2019 - 31/12/2019	01/01/2018 - 31/12/2018	01/10/2019 - 31/12/2019	01/10/2018 - 31/12/2018
	€000	€000		
Continuing operations				
Sales revenue	19 061	18 891	6 182	4 600
Cost of sales	(15 172)	(15 153)	(4 950)	(3 785)
Gross profit	3 889	3 737	1 232	816
Administrative expenses	(757)	(386)	(269)	(151)
Selling expenses	(2 622)	(2 773)	(916)	(495)
Other expenses	(492)	(831)	(177)	(179)
Other income	460	775	144	107
Financial expenses	(495)	(323)	(146)	(129)
Profit before tax	(18)	200	(132)	(32)
Income tax expense	(57)	(38)	(31)	2
Net profit for the period	-75	162	-163	-30
Other comprehensive expense for the year				
Currency translation difference	499	92	157	260
Profit for the year attributable to				
Total comprehensive income for the year	424	254	(6)	229

3.2 CONDENSED STATEMENT OF FINANCIAL POSITION

Condensed statement of financial position



as at 31 December 2019 and 31 December 2018 (with comparative data)

	31 December, 2019	31 December, 2018
Assets	€000	€000
Non-current assets		
Property, plant and equipment	3 373	2 241
Total non-current assets	3 373	2 241
Current assets		
Inventories	3 029	2 465
Trade and other receivables	4 002	3 475
Cash and cash equivalent	70	244
Total current assets	7 101	6 185
Total assets	10 475	8 426
Equity and liabilities		
Share capital	53	53
Additional paid-in capital	111	111
Exchange differences	-3 910	-4 812
Retained earnings	6 780	6 854
Equity attributable to equity holders of the parent	3 034	2 206
Non-current liabilities		
Deferred tax liability	8	7
Loans and borrowings non-current	0	0
Total non-current liabilities	8	7
Current liabilities		
Loans and borrowings current	4 241	2 173
Trade and other payables	3 192	4 041
Total current liabilities	7 433	6 213
Total liabilities	7 441	6 220
Total equity and liabilities	10 475	8 426

3.3 CONDENSED CONSOLIDATED STATEMENT OF CASHFLOW

Condensed statement of cash flows for the period ended 31.12.2019 with comparative data for 31.12.2018



Condensed statement of cash flows
 for the period from 01/01 to 31/12 of 2019 year

€ '000	01/01/2019 - 31/12/2019	01/01/2018 - 31/12/2018
Cash flows from operating activities		
Profit before tax	-18	200
Adjustments for:		0
Depreciation of property, plant and equipment	84	335
Exchange difference arising on the translation of assets on foreign currencies	499	92
Excess of Group's interest in the net fair value of the subsidiaries' assets and liabilities over cost on acquisition	0	0
Impairment charge of property, plant and equipment	0	0
Interest income	0	0
Interest expense	-495	-323
Cash flows from operations before working capital changes	70	303
Increase in inventories and work in progress	-564	129
Increase in trade and other receivables	-527	-961
(Decrease)/increase in trade and other payables	-849	573
Cash flows from operations	-1 870	44
Tax refunded/income tax paid	-57	-38
Net cash flows from operating activities	-1 927	7
		0
Cash flows from investing activities		
Payment for purchase of property, plant and equipment	-315	-561
Acquisition of subsidiaries, net cash outflow on acquisition	0	0
Loans granted	0	0
Interest received	0	0
Net cash flows used in investing activities	-315	-561
		0
Cash flows from financing activities		
Proceeds from issue of share capital	0	0
Obtaining loans and borrowings	2 069	745
Repayments of borrowings	0	0
Suspense account (pending correction of Depreciation, Minority interest and share capital)	0	0
Net cash flows (used in)/from financing activities	2069	745
Net decrease in cash and cash equivalents	-174	190
Cash and cash equivalents:		0
At beginning of the year/period	244	58
At end of the year/period	70	249

3.4 CONDENSED CONSOLIDATED STATEMENT FOR CHANGES IN EQUITY


Condensed statement for changes in equity for the period ended 31.12.2019 year.

Condensed statement for changes in equity
for the period from 01/01 to 31/12 of 2019 year

	Attributable to equity holders of the Company					Total
	Share capital	Share premium	Translation reserve	Retained earnings	Non-controlling interests	
	€000	€000	€000	€000	€000	€000
Balance at 31 December 2017	53	111	- 4 806	6 685	-	2 043
Net profit the period	-	-	-	170	-	170
Issue of share capital	-	-	-	-	-	-
Exchange difference on the translation and consolidation of foreign companies' financial statements	-	-	- 7	-	-	7
Balance at 31 December 2018	53	111	- 4 813	6 855	-	2 206
Net profit the period	-	-	-	75	-	75
Issue of share capital	-	-	-	-	-	-
Exchange difference on the translation and consolidation of foreign companies' financial statements	-	-	902	-	-	902
Balance at 31 December 2019	53	111	- 3 911	6 780	-	3 034

4 APPLIED ACCOUNTANCY PRINCIPLES

These interim financial statements have been prepared based on IAS 34 Interim Financial Reporting. These interim financial statements include substantial information required for a complete set of IFRS financial statements. The Board of Director's commentary included, explain events and transactions that are significant to an understanding of the changes in the Group's financial position and performance since the last annual consolidated financial statements.

There were changes in accounting policy in stand alone accountancy in the course of 2019.

At initial recognition, the Company measures a financial asset at its fair value plus, in the case of a financial asset not at fair value through profit or loss (FVTPL), transaction costs that are directly attributable to the acquisition of the financial asset. Transaction costs of financial assets carried at FVTPL are expensed in profit or loss. Fair value at initial recognition is best evidenced by the transaction price. A gain or loss on initial recognition is only recorded if there is a difference between fair value and transaction price which can be evidenced by other observable current market transactions in the same instrument or by a valuation technique whose inputs include only data from observable markets. So Company's financial asset were measured by the transaction price.

Above implication has no effect Group financial statement during period 01.01.2019-31.12.2019

Judgments and estimates

In preparing these interim financial statements, management made judgments, estimates and assumptions that affect the application of accounting policies and the reported amounts of assets and liabilities, income and expense. Actual results may differ from these estimates.

The significant judgments made by management in applying the Group's accounting policies and the key sources of estimation uncertainty were the same as those that applied to the consolidated



financial statements as at and for the year ended 31 December 2018.

Significant accounting policies

Except as described herewith, the accounting policies applied in these interim financial statements are the same as those applied in the Group's consolidated financial statements as at and for the year ended 31 December 2018.

Consolidation

These consolidated financial statements have been prepared in accordance with International Financial Reporting Standards (IFRSs) as adopted by the European Union (EU) and the requirements of the Cyprus Companies Law, Cap.113. These consolidated financial statements have been prepared by the consolidation of the historical financial statements of each of the Group's companies, on the basis of the accounting records of these companies.

Subsidiaries are all Groups' entities over which the group has the power to govern the financial and operating policies generally accompanying a shareholding of more than one half of the voting rights. The financial statements of subsidiaries are included in the consolidated financial statements from the date that control commences until the date that control ceases.

Inter-company transactions, balances and unrealized gains on transactions between group companies are eliminated.

Summary of significant accounting policies

The main principles of accounting policy, which have been adopted in the preparation of this audit consolidated financial information, are described below.

Revenue recognition

Revenue is recognized to the extent that it is probable that the economic benefits will flow to the Group and the revenue can be reliably measured. Revenue is measured at the fair value of the consideration received, excluding discounts, rebates, and sales taxes or duty. The Group assesses its revenue arrangements against specific criteria in order to determine if it is acting as a principal or agent. The Group has concluded that it is acting as a principal in all of its revenue arrangements. The following specific recognition criteria must also be met before revenue is recognized:

Sale of goods

Revenue from the sale of goods is recognized when the significant risks and rewards of ownership of the goods have passed to the buyer, usually on delivery of the goods.

Rendering of services

Revenues from services are recognized when such services are rendered and revenue can be reliably measured

Taxes

Current income tax

Current tax assets and liabilities for the current and prior periods are measured at the amount expected to be recovered from or paid to the taxation authorities. The tax rates and tax laws used to compute the amount are those that are enacted or substantively enacted by the reporting date.

Deferred income tax

Deferred income tax is provided using the liability method on temporary differences at the reporting date between the tax bases of assets and liabilities and their carrying amounts for financial reporting purposes. Deferred tax liabilities are recognized for all taxable temporary differences, except:



- where the deferred tax liability arises from the initial recognition of goodwill or of an asset or liability in a transaction that is not a business combination and, at the time of the transaction, affects neither the accounting profit nor taxable profit or loss; and
- in respect of taxable temporary differences associated with investments in subsidiaries, where the timing of the reversal of the temporary differences can be controlled and it is probable that the temporary differences will not reverse in the foreseeable future.

Deferred income tax assets are recognized for all deductible temporary differences, carry-forward of unused tax credits and unused tax losses, to the extent that it is probable that taxable profit will be available against which the deductible temporary differences, and the carry-forward of unused tax credits and unused tax losses can be utilized except:

- where the deferred income tax asset relating to the deductible temporary difference arises from the initial recognition of an asset or liability in a transaction that is not a business combination and, at the time of the transaction, affects neither the accounting profit nor taxable profit or loss; and
- in respect of deductible temporary differences associated with investments in subsidiaries, deferred tax assets are recognized only to the extent that it is probable that the temporary differences will reverse in the foreseeable future and taxable profit will be available against which the temporary differences can be utilized.

The carrying amount of deferred income tax assets is reviewed at each reporting date and reduced to the extent that it is no longer probable that sufficient taxable profit will be available to allow all or part of the deferred income tax asset to be utilized. Unrecognized deferred income tax assets are reassessed at each reporting date and are recognized to the extent that it has become probable that future taxable profit will allow the deferred tax asset to be recovered.

Deferred income tax assets and liabilities are measured at the tax rates that are expected to apply to the year when the asset is realized or the liability is settled, based on tax rates (and tax laws) that have been enacted or substantively enacted at the reporting date. Deferred tax relating to items recognized in other comprehensive income is recognized in other comprehensive income. Deferred tax items are recognized in correlation to the underlying transaction either in other comprehensive income or directly in equity. Deferred tax assets and deferred tax liabilities are offset, if a legally enforceable right exists to set off current tax assets against current tax liabilities and the deferred taxes relate to the same taxable entity and the same taxation authority.

Value added tax

Revenues, expenses and assets are recognized net of the amount of value-added tax ("VAT") except:

- where VAT incurred on a purchase of assets or services is not recoverable from the taxation authority, in which case VAT is recognized as part of the cost of acquisition of the asset or as part of expense item as applicable; and
- receivables and payables are stated with the amount of VAT included.

The net amount of VAT recoverable from, or payable to, the taxation authority is disclosed on the face of the consolidated statement of financial position.

Property, plant and equipment

Items of property, plant and equipment are stated at cost, less accumulated depreciation and/or accumulated impairment losses, if any.



Cost includes expenditures that are directly attributable to the acquisition of the asset. The cost of self-constructed assets includes the cost of materials and direct labour, capitalized directly attributable borrowing costs in accordance with early adopted International Financial Reporting Standard IAS 23 Borrowing Costs (Revised), any other costs directly attributable to bringing the asset to a working condition for its intended use, and the costs of dismantling and removing the items and restoring the site on which they are located.

Where an item of property, plant and equipment comprises major components having different useful lives, they are accounted for as separate items of property, plant and equipment.

Depreciation is calculated on a straight-line basis over the estimated useful life of the asset as follows:

Group of fixed assets	years
Buildings	50
Plant and equipment	20
Motor vehicles	10
Other	10

Group as a lessor

Leases where the Group does not transfer substantially all the risks and benefits of ownership of the asset are classified as operating leases. Initial direct costs incurred in negotiating an operating lease are added to the carrying amount of the leased asset and recognized over the lease term on the same bases as rental income. Contingent rents are recognized as revenue in the period in which they are earned.

Borrowing costs

Borrowing costs directly attributable to the acquisition, construction or production of an asset that necessarily takes a substantial period of time to get ready for its intended use or sale are capitalized as part of the cost of the respective assets. All other borrowing costs are expensed in the period they occur. Borrowing costs consist of interest and other costs that an entity incurs in connection with the borrowing of funds.

Finance costs

Interest expense and other borrowing costs are charged to profit or loss as incurred.

Financial instruments:

Financial assets

Initial recognition

Financial assets in the scope of IAS 39 are classified as financial assets at fair value through profit or loss, held-to-maturity investments, loans and receivables, available-for-sale financial assets, or as derivatives designated as hedging instruments in an effective hedge, as appropriate. The Group determines the classification of its financial assets at initial recognition.

All financial assets are recognized initially at fair value plus, in the case of investment not at fair value through profit or loss, directly attributable transaction costs.

Purchases or sales of financial assets that require delivery of assets within a time frame established by regulation or convention on the marketplace (regular way trades) are recognized on the trade date, i.e. the date that the Group commits to purchase or sell the asset.

The Group's financial assets include cash and cash equivalents as well as loan, trade and other receivables.

Subsequent measurement



The subsequent measurement of financial assets depends on their classification as follows:

Cash and cash equivalents

Cash and cash equivalents in the statement of financial position comprise cash at banks and on hand and short-term deposits with an original maturity of three months or less.

For the purpose of the combined statement cash flows, cash and cash equivalents consist of cash as defined above.

Loans, trade and other receivables

Loans and receivables are non-derivative financial assets with fixed or determinable payments that are not quoted in an active market. After initial measurement, such financial assets are carried at amortized cost using the effective interest rate method, less any allowance for impairment. Amortized cost is calculated by taking into account any discount or premium on acquisition and includes fees or costs that are an integral part of the effective interest rate. Gains and losses are recognized as income or expenses when the loans and receivables are derecognized or impaired, as well as through the amortization process.

Derecognition

A financial asset (or, where applicable a part of a financial asset or part of a group of similar financial assets) is derecognized when:

- The rights to receive cash flows from the asset have expired.
- The Group has transferred its rights to receive cash flows from the asset or has assumed an obligation to pay the received cash flows in full without material delay to a third party under a 'pass-through' arrangement; and either (a) the Group has transferred substantially all the risks and rewards of the asset, or (b) the Group has neither transferred nor retained substantially all the risks and rewards of the asset, but has transferred control of the asset.

When the Group has transferred its rights to receive cash flows from an asset or has entered into a pass-through arrangement, and has neither transferred nor retained substantially all the risks and rewards of the asset nor transferred control of the asset, the asset is recognized to the extent of the Group's continuing involvement in the asset. In that case, the Group also recognizes an associated liability. The transferred asset and the associated liability are measured on a basis that reflects the rights and obligations that the Group has retained.

Continuing involvement that takes the form of a guarantee over the transferred asset, is measured at the lower of the original carrying amount of the asset and the maximum amount of consideration that the Group could be required to repay.

(4) Impairment

The Group assesses at each reporting date whether there is any objective evidence that a financial asset or a group of financial assets is impaired. A financial asset or a group of financial assets is deemed to be impaired if, and only if, there is objective evidence of impairment as a result of one or more events that has occurred after the initial recognition of the asset (an incurred 'loss event') and that loss event has an impact on the estimated future cash flows of the financial asset or the group of financial assets that can be reliably estimated. Evidence of impairment may include indications that the debtors or a group of debtors is experiencing significant financial difficulty, default or delinquency in interest or principal payments, the probability that they will enter bankruptcy or other financial reorganization and where observable data indicate that there is a measurable decrease in the estimated future cash flows, such as changes in arrears or economic conditions that correlate with defaults.

Financial assets carried at amortized cost



For financial assets carried at amortized cost the Group first assesses individually whether objective evidence of impairment exists individually for financial assets that are individually significant, or collectively for financial assets that are not individually significant. If the Group determines that no objective evidence of impairment exists for an individually assessed financial asset, whether significant or not, it includes the asset in a group of financial assets with similar credit risk characteristics and collectively assesses them for impairment. Assets that are individually assessed for impairment and for which an impairment loss is, or continues to be, recognized are not included in a collective assessment of impairment.

If there is objective evidence that an impairment loss has incurred, the amount of the loss is measured as the difference between the asset's carrying amount and the present value of estimated future cash flows (excluding future expected credit losses that have not yet been incurred). The present value of the estimated future cash flows is discounted at the financial assets original effective interest rate. If a loan has a variable interest rate, the discount rate for measuring any impairment loss is the current effective interest rate.

The carrying amount of the asset is directly reduced for credit losses and the amount of the loss is recognized as other operating expenses in the statement of comprehensive income. Interest income continues to be accrued on the reduced carrying amount and is accrued using the rate of interest used to discount the future cash flows for the purpose of measuring the impairment loss. The interest income is recorded as part of finance income in the statement of comprehensive income. Loans are written off when there is no realistic prospect of future recovery and all collateral has been realized or has been transferred to the Group. If, in a subsequent year, the amount of the estimated impairment loss increases or decreases because of an event occurring after the impairment was recognized, the previously recognized impairment loss is increased or reduced by adjusting profit and loss. If a future write-off is later recovered, the recovery is credited to finance costs in the statement of comprehensive income.

Financial liabilities

Initial recognition and measurement

Financial liabilities within the scope of IAS 39 are classified as financial liabilities at fair value through profit or loss, loans and borrowings, or as derivatives designated as hedging instruments in an effective hedge, as appropriate. The Group determines the classification of its financial liabilities at initial recognition. All financial liabilities are recognized initially at fair value and in the case of loans and borrowings, plus directly attributable transaction costs.

The Group's financial liabilities include trade and other payables and interest-bearing loans and borrowings.

Subsequent measurement

The measurement of financial liabilities depends on their classification as follows:

Trade and other payables

After initial recognition, trade and other payables with fixed maturity are subsequently measured at amortized cost using the effective interest rate method. Amortized cost is calculated by taking into account any transaction costs and any discount or premium on settlement.

Interest-bearing loans and borrowings

After initial recognition, interest-bearing loans and borrowings are subsequently measured at amortized cost using the effective interest rate method. Gains and losses are recognized in net profit or loss when the liabilities are derecognized as well as through the amortization process.

Derecognition

A financial liability is derecognized when the obligation under the liability is discharged or cancelled or expires.



Where an existing financial liability is replaced by another from the same lender on substantially different terms, or the terms of an existing liability are substantially modified, such an exchange or modification is treated as a derecognition of the original liability and the recognition of a new liability, and the difference in the respective carrying amounts is recognized in profit or loss.

Fair value of financial instruments

The fair value of financial instruments that are traded in active markets at each reporting date is determined by reference to quoted market prices or dealer price quotations (bid price for long positions and ask price for short positions), without any deduction for transaction costs. For financial instruments not traded in an active market, the fair value is determined using appropriate valuation techniques. Such techniques may include using recent arm’s length market transactions; reference to the current fair value of another instrument that is substantially the same; discounted cash flow analysis or other valuation models.

Offsetting of financial instruments

Financial assets and financial liabilities are offset and the net amount reported in the combined statement of financial position if, and only if, there is a currently enforceable legal right to offset the recognized amounts and there is an intention to settle on a net basis, or to realize the assets and settle the liabilities simultaneously.

Issued capital

Share capital is recognized at the fair value of consideration received. Any excess over the nominal value of shares is taken to the share premium reserve. Cost incurred for issuing new share capital when the issuance results in a net increase or decrease to equity are charged directly to equity. Costs incurred for issuing new share capital when the issuance does not result in a change in equity are taken to profit or loss.

Provisions

Provisions are recognized when the Group has a present obligation (legal or constructive) as a result of a past event, it is probable that an outflow of resources embodying economic benefits will be required to settle the obligation and a reliable estimate can be made of the amount of the obligation. Where the Group expects some or all of a provision to be reimbursed, for example under an insurance contract, the reimbursement is recognized as a separate asset but only when the reimbursement is virtually certain. The expense relating to any provision is presented in profit and loss net of any reimbursement. If the effect of the time value of money is material, provisions are discounted using a current pre-tax rate that reflects, where appropriate, the risks specific to the liability. Where discounting is used, the increase in the provision due to the passage of time is recognized as a finance cost.

Inventories

Originally inventories are stated at the lower of cost and net realizable value after making an allowance for any obsolete or slow-moving items. The cost of inventories includes the expenditure incurred in acquiring the inventories and bringing them to their existing location and condition. At disposal cost of raw materials, spare parts and goods is determined based on the FIFO method, whereas cost of finished goods is determined based on the weighted average cost method. Net realizable value is the estimated selling price in the ordinary course of business, less any estimated costs necessary to make the sale.



Impairment of non-financial assets

The Group assesses at each reporting date whether there is an indication that an asset may be impaired. If any indication exists, the Group estimates the asset's recoverable amount. An asset's recoverable amount is the higher of an asset's or cash-generating unit's (CGU) fair value less costs to sell and its value in use and is determined for an individual asset, unless the asset does not generate cash inflows that are largely independent of those from other assets or groups of assets. Where the carrying amount of an asset or CGU exceeds its recoverable amount, the asset is considered impaired and is written down to its recoverable amount. In assessing value in use, the estimated future cash flows are discounted to their present value using a pre-tax discount rate that reflects current market assessments of the time value of money and the risks specific to the asset. In determining fair value less costs to sell, an appropriate valuation model is used. These calculations are corroborated by valuation multiples or other available fair value indicators.

Impairment losses of continuing operations are recognized in profit and loss in those expense categories consistent with the function of the impaired asset, except for property, plant and equipment previously revalued where the revaluation was taken to other comprehensive income. In this case, the impairment is also recognized in other comprehensive income up to the amount of any previous revaluation.

An assessment is made at each reporting date as to whether there is any indication that previously recognized impairment losses may no longer exist or may have decreased. If such indication exists, the Group estimates the asset's or cash-generating unit's recoverable amount. A previously recognized impairment loss is reversed only if there has been a change in the assumptions used to determine the asset's recoverable amount since the last impairment loss was recognized. The reversal is limited so that the carrying amount of the asset does not exceed its recoverable amount, nor exceed the carrying amount that would have been determined, net of depreciation, had no impairment loss been recognized for the asset in prior years. Such reversal is recognized in income unless the asset is carried at a revalued amount, in which case the reversal is treated as a revaluation increase.

The Group does not have the assets, for which annual impairment testing is required.

Foreign currency transactions and translation to presentation currency

(1) Transactions and balances

Transactions in foreign currencies are initially recorded by the Group entities at the functional currency rates prevailing at the date of the transaction.

Monetary assets and liabilities denominated in foreign currencies are retranslated at the functional currency spot rate of exchange ruling at the reporting date. All differences are taken to profit and loss.

Non-monetary items that are measured in terms of historical cost in a foreign currency are translated using the exchange rates as at the dates of the initial transactions. Non-monetary items measured at fair value in a foreign currency are translated using the exchange rates at the date when the fair value is determined.

(2) Translation to presentation currency

At each reporting date, the assets and liabilities of each company are translated into the Group's presentation currency at the rate of exchange prevailing at the reporting date. The revenues and expenses for the year or, if shorter, the period of combined of subsidiary in the Group are translated at the exchange rate prevailing at the date of transaction or average exchange rate for the period if it approximates the rate as of the date of transaction. The exchange differences arising on the translation are recognized in other comprehensive income.



Contingent assets and liabilities

A contingent asset is not recognized in the financial statements but disclosed when an inflow of economic benefits is probable.

Contingent liabilities are not recognized in the financial statements unless it is probable that an outflow of economic resources will be required to settle the obligation and it can be reasonably estimated. They are disclosed unless the possibility of an outflow of resources embodying economic benefits is remote.

Subsequent events

Events, which took place after the reporting date and prior to the date of approval of financial reports to be issued which provide additional information regarding the financial statements of the Group, are reflected in financial statements.



5 THE BOARD OF DIRECTORS' COMMENT ON THE FACTORS AND EVENTS THAT AFFECT THE ACHIEVED FINANCIAL RESULTS.

5.1 COMMENTS TO THE CONDENSED CONSOLIDATED STATEMENT OF COMPREHENSIVE INCOME AND FINANCIAL POSITION

Commentary for 4 Q 2019 profit and loss accounts in comparison to 4 Q 2018 as well as comparison of 1-4 Q 2019 vs. 1-4Q 2018 for the consolidated statement.

Sales in 4 Q 2019 in comparison to 4 Q 2018 increased by 34% from EUR 4 600 thousand to EUR 6 182 thousand. Mainly due to increase in sales of buckwheat. Cost of sales also by 30%. Sales gross profit reached EUR 1 232 thousand and was by 50% more than in 4 Q 2018. At the year-end there was a net loss of EUR 163 thousand, due to increase of selling expenses.

The aggregated sales for 1-4Q 2019 increased by 0,9%. Gross profit was bigger by 4% and reached EUR 3 889 thousand. 1-4Q 2019 ended up with the loss of EUR 75 thousand, but due to currency translation difference of EUR 499 thousand profit for the year reached EUR 424 thousand.

Return on sales for 1-4 Q 2019 increased to 2,2 % and gross profit margin ratio in 1-4 Q 2019 was 20,4% in comparison to 19,7 in 1-4Q 2018. Return on sales was improved due to currency difference.

Financial position for the 1-4 Q 2019 represented the following figures; total assets increased by 24% in comparison to 1-4 Q 2018. Mainly due to the increase in non-current assets. The Company expanded machinery park and production lines. On the liabilities side, there was increase in equity by 37%. Current liabilities increased by 19%; borrowings increased by 95% but trade and others payables decreased by 21%.

ROA ratio was 4% in 2019, and ROE reached 14% at 31.12.2019.

5.2 COMMENTS TO THE CONDENSED CONSOLIDATED STATEMENT OF CASH FLOW

Net cash flow from operations before working capital changes for the period 1-4Q 2019 was EUR 70 thousand in comparison to 1-4Q 2018 EUR 303 thousand in the comparative period. Aggregated net cash flow at the end of the period EUR 70 thousand and was 71% lower versus comparative period.

5.3 COMMENTS TO THE CONDENSED CONSOLIDATED STATEMENT FOR CHANGE IN EQUITY

Equity balance in the 1-4Q 2019 was by 27% more than at the end of 2018 and reached EUR 3 034 thousand

6 REPORT ON THE COMPANY'S ACTIVITIES IN 4 Q 2019

6.1 COMPANY'S ACTIVITY

The Company continued regular sales in bulk and to the retail networks. Production mix of the Company continues to increase variety, there was increase in buckwheat and bulgur.

The Company enlarge number of customers. In 4 Q 2019 the customers from European Union were acquired.

6.2 EXCHANGE RATES



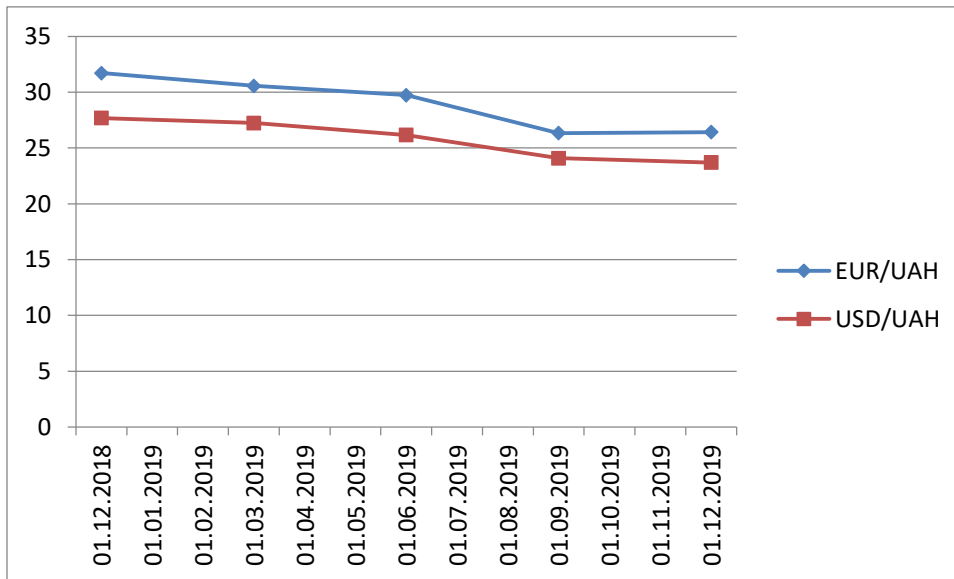
Since the company has substantial export FX has a crucial influence on the profit and loss accounts. From 31.12.2018 till the end of 2019 UAH appreciated toward EUR and USD. UAH appreciated from 31.12.2018 toward EUR by 16,68% and USD 14,43% respectively. Graph visualizes FX rates in 2019 and comparison in 2018.

Table 1: Central Bank exchange rates

	31.12.2019	30.09.2019	30.06.2019	31.03.2019	31.12.2018	Δ % 31.12.2019/31.12.2018
EUR/UAH	26,422	26,3345	29,7302	30,56	31,71	-16,68%
USD/UAH	23,6862	24,0828	26,1663	27,24	27,68	-14,43%

Source: the Issuer

Chart 1: FX rates



Source: the Issuer

6.3 PRODUCTION ACTIVITY

In 4 Q 2018 the Company increase production by 25 % to 10 962 tones. The biggest increase was in buckwheat – 147%, and bulgur by 68% to 1 945 t Breakdown of 4Q 2019 production is reflected in the tables below.

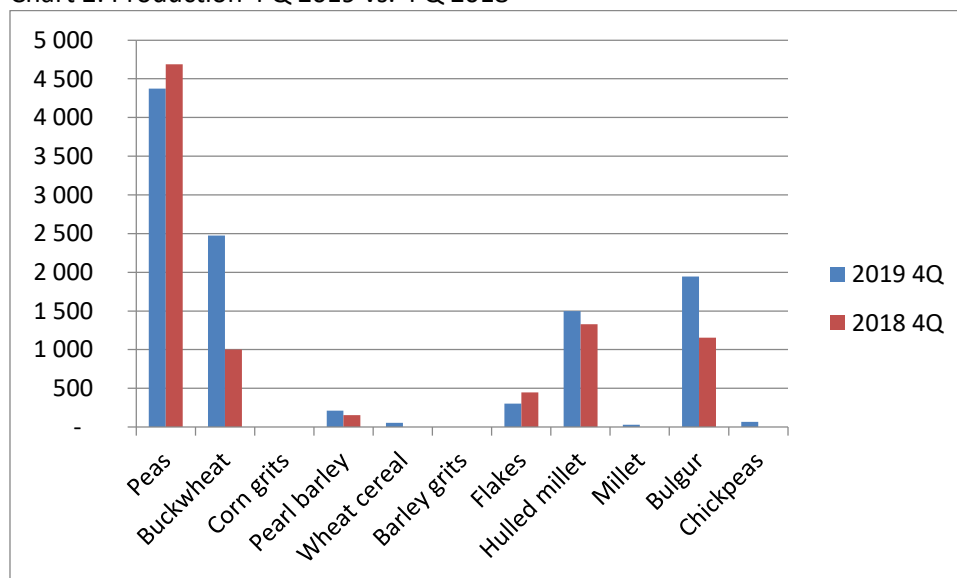
Table 2: Production in tons Production 4 Q 2019 vs. 34Q 2018



Production, tonnes	2019 4Q	2018 4Q	Δ 4Q19/4Q18
Peas	4 375	4 688	-7%
Buckwheat	2 473	1 000	147%
Corn grits	-	-	0%
Pearl barley	213	152	40%
Wheat cereal	56	-	0%
Barley grits	-	-	0%
Flakes	302	449	-33%
Hulled millet	1 500	1 327	13%
Millet	29	-	0%
Bulgur	1 945	1 156	68%
Chickpeas	69	-	0%
Lentils	-	-	0%
Total	10 962	8 772	25%

Source: the Issuer

Chart 2: Production 4 Q 2019 vs. 4 Q 2018



Source: the Issuer

Production for the 1-4 Q 2019 shows trends in production. Total production declined by 29% due to decline in peas production which dropped by 63% from 32 587 t to 11 993 t. Buckwheat production increased by 27%. Flakes increased by 56% to 1 653 tons. Hulled millet increased by 46% to 3 640 tons, bulgur respectively increased by 86% in the comparative period to 6 208 tons.

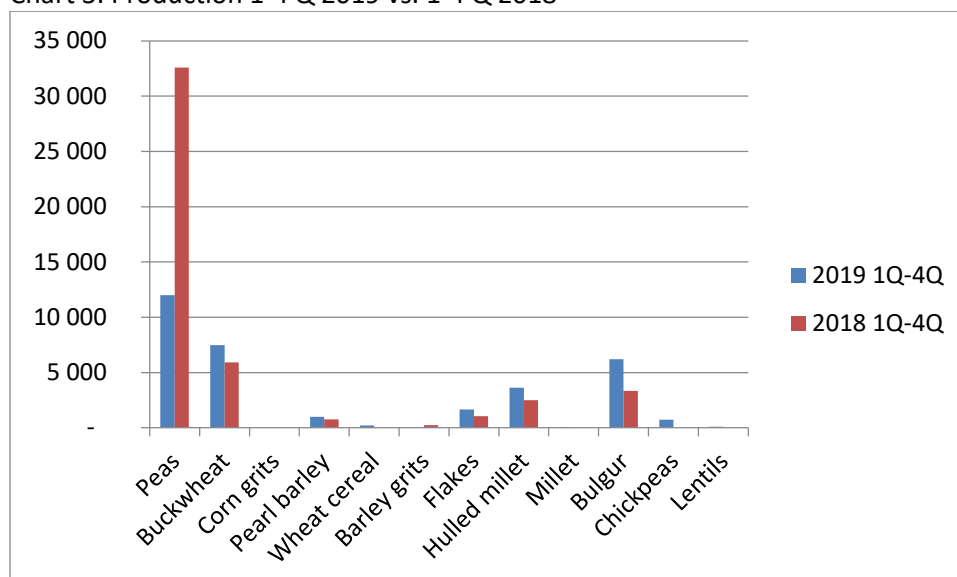
Table 3: Production in tons Production 1-4 Q 2019 vs. 1-4 Q 2018



Production, tonnes	2019 1Q-4Q	2018 1Q-4Q	Δ 1-4Q19/1-4Q18
Peas	11 993	32 587	-63%
Buckwheat	7 481	5 904	27%
Corn grits	-	-	0%
Pearl barley	987	758	30%
Wheat cereal	214	-	0%
Barley grits	-	226	-100%
Flakes	1 653	1 061	56%
Hulled millet	3 640	2 487	46%
Millet	76	-	0%
Bulgur	6 208	3 345	86%
Chickpeas	740	-	0%
Lentils	97	-	0%
Total	33 089	46 369	-29%

Source: the Issuer

Chart 3: Production 1-4 Q 2019 vs. 1-4 Q 2018



Source: the Issuer

6.4 SUPPLY OF RAW MATERIAL, DISTRIBUTION AND TRADE ACTIVITY

Supply of grain and processing into cereal is held in Kharkov region and is executed without interruption. Supply of raw material for further processing in 4 Q 2019 was executed mainly from Ukraine, except exotic products like rice.

6.5 EXPORT AND IMPORT

Export in 4 Q 2019 increased by in EUR by 3 % but in UAH decreased by 21% due to exchange differences. UAH appreciated toward EUR in this period. Import increased 4 Q 2019 by 668% in EUR terms to EUR 1 172 thousand. Volume of exports is substantially bigger than imports. Aggregated



export for 1-4Q 2019 declined by 16% to EUR 9 674 thousand and imports increased by 48% to EUR 1 851 thousand

Table 4: Export and import 4 Q 2019 vs. 4 Q 2018

items	2019 4Q		2018 4Q		Δ 4Q19/4Q18	
	UAH	EUR	UAH	EUR	UAH	EUR
Cereal import	28 451 941	1 172 765	4 872 175	152 667	484%	668%
Cereal export	70 413 222	2 902 373	89 613 616	2 807 995	-21%	3%

Source: the Issuer

Table 5: Export and import 1-4Q 2019 vs. 1-4Q 2018

items	2019 1Q-4Q		2018 1Q-4Q		Δ 1-4Q19/1-4Q18	
	UAH	EUR	UAH	EUR	UAH	EUR
Cereal import	48 143 359	1 851 428	40 594 911	1 254 017	19%	48%
Cereal export	272 453 833	9 674 743	371 668 989	11 584 420	-27%	-16%

Source: the Issuer

7 THE MANAGEMENT BOARD'S STANDPOINT AS TO THE FORECASTS

The Board of Directors did not announce any projections.

8 EXECUTION OF THE INVESTMENT PIPELINE

In the 4 Q 2019 the Company focused on adjustment products to the current market needs. Investment are executed very cautiously. The Company continued development of bulgur production line. In the production bulgur constitutes considerable portion.

9 INITIATIVES TO DEVELOP ITS ACTIVITIES AIMED TO IMPLEMENT INNOVATIVE SOLUTIONS AT THE ENTERPRISE DURING THE PERIOD OF THE REPORT –INFORMATION ON SUCH ACTIVITIES

Cereal Planet Group has not undertaken any initiatives related to the innovation solutions in the period covered by this Report.

10 COMPANY STRUCTURE, SUBJECT TO CONSOLIDATION

Table 6: CEREAL PLANET GROUP CONSISTS OF 2 COMPANIES

Name	Address	Profile	Shareholders
Cereal Planet PLC	Boumpoulinas, 11 3rd Floor, 1060 NICOSIA, CYPRUS	Holding company In Cyprus	Holding company, 5 persons being majority shareholders
Olimp LLC	61124 Kharkov, Kashtanova 10 str	Trading and distribution company	100% belongs to Cereal Planet LLC

Source: the Issuer

11 SHAREHOLDERS STRUCTURE

The Shareholding structure of the Company, indicating shareholders at the date of report as of 31.12.2019.



Table 7: SHAREHOLDERS STRUCTURE

Shareholder	Number of shares	Number of votes at the general meeting	Percentage in share capital	Percentage in the total number of votes at the general meeting
Vlasenko Anatoli	597 002	597 002	33.54%	33.53%
Dubruskin Igor	97 830	97 830	5.50%	5.50%
Vlasenko Oleksander	532 723	532 723	29.93%	29.93%
Slavgorodskyi Oleksander	532 723	532 723	29.93%	29.93%
Other shareholders	19 722	19 722	2.25%	1,11%
Total	1 780 000	1 780 000	100%	100%

Source: the Issuer

12 NUMBER OF EMPLOYEES AT THE END OF 4 Q 2019

Cereal Planet PLC itself does not employ personnel. Employees are located in the companies of CEREAL PLANET GROUP.

Table 8: NUMBER OF EMPLOYEES

Number of employees	4Q 2019	4Q 2018
Production	135	198
Non production employees	150	134
Total	285	332

Source: the Issuer

Antoliy Vlasenko,
Chairman of the Board of Directors

